



HANSSY SHIPPING

M. V. HAN HE

(HONG KONG 2001)

PRINCIPAL PARTICULARS:

LOA: 130.73m	DWT: 11,908tons
LPP: 122.90m	GRT: 9,235tons
BREADTH: 19.6m	NRT: 3,695tons
DEPTH: 13.2m	LIGHT SHIP: 3569tons
DRAFT: 7.719m	CRANE: 2*30t, COMBINED UP TO 60t
FREEBOARD: 5.515m	DERRICK: 1*30t
GRAIN CAPACITY: 20,780.59m ³	SERVICE SPEED: 12.9kts
BALE CAPACITY: 18,914.75m ³	MAIN ENGINE:B&W 6L35MC(MARK6)*1 SET
NO. OF HATCH/HOLD: 2/2	M.C.O: 3883kW(5280PS)*210/min
IMO NO.: 9240055	CALL SIGN: VRGH5
FLAG: HONG KONG	TYPE: GENERAL CARGO SHIP
YEAR OF BUILT: 2001	CLASS: NK
PLACE OF BUILT: SHIN KOCHIYUKO CO, LTD. KOCHI, JAPAN	

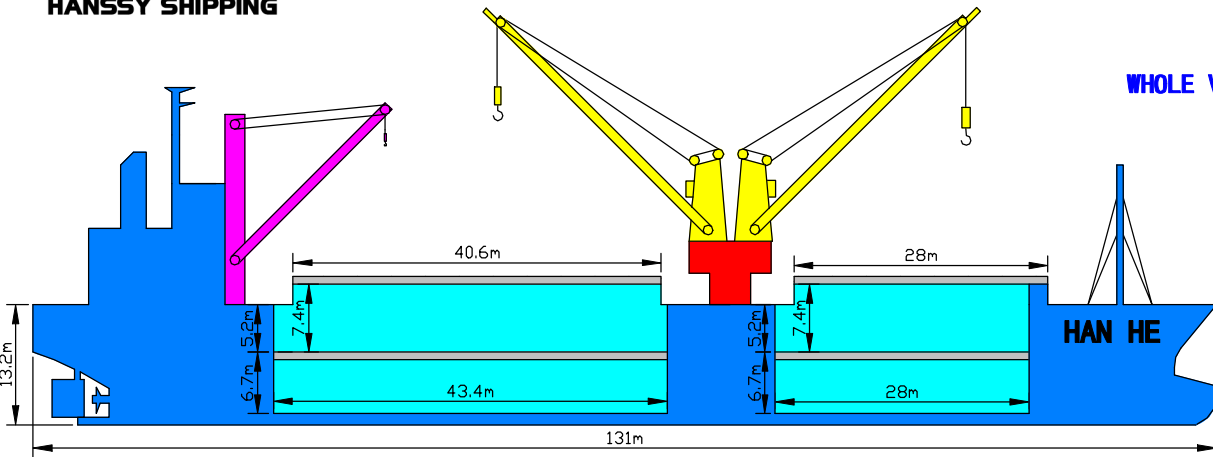
DETAILS ARE BELIEVED TO BE CORRECT,BUT ARE NOT GUARANTEED



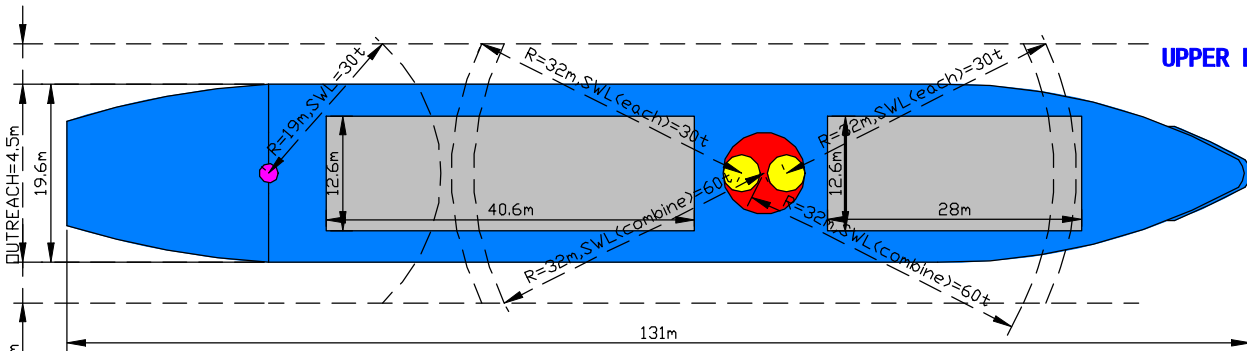
M. V. HAN HE (HONG KONG 2001)

HANSY SHIPPING

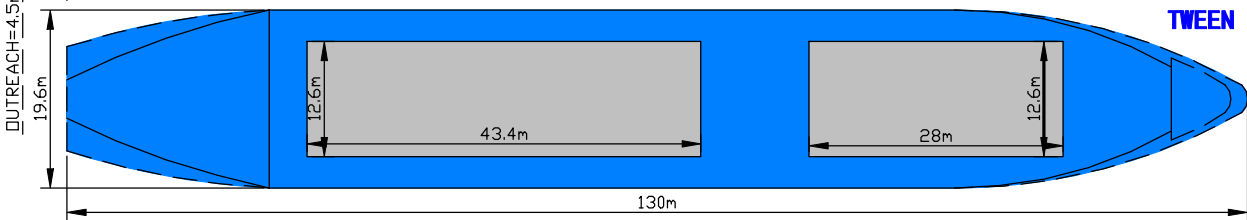
WHOLE VESSEL



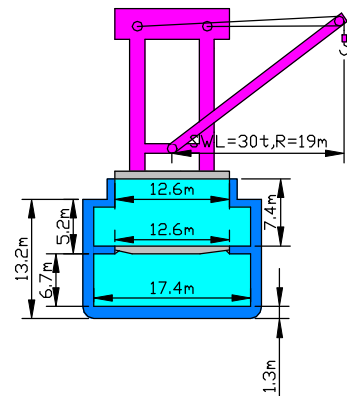
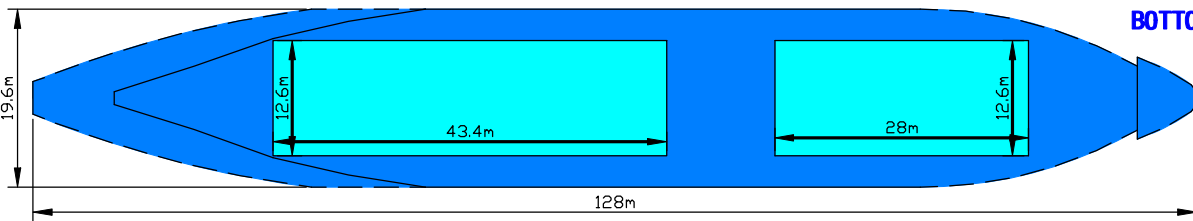
UPPER DECK



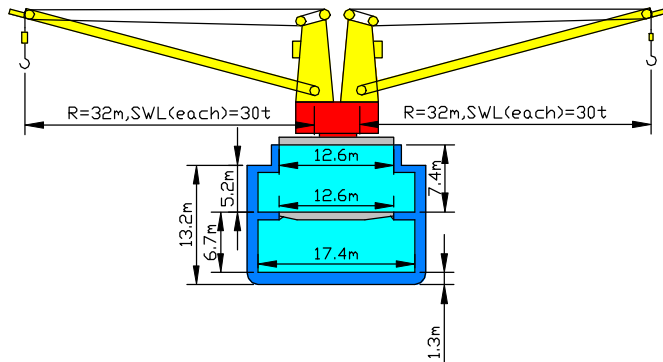
TWEEN DECK



BOTTOM PLAN



DERRICK WITH CARGO HATCH AND CARGO HOLD



CRANE WITH CARGO HATCH AND CARGO HOLD

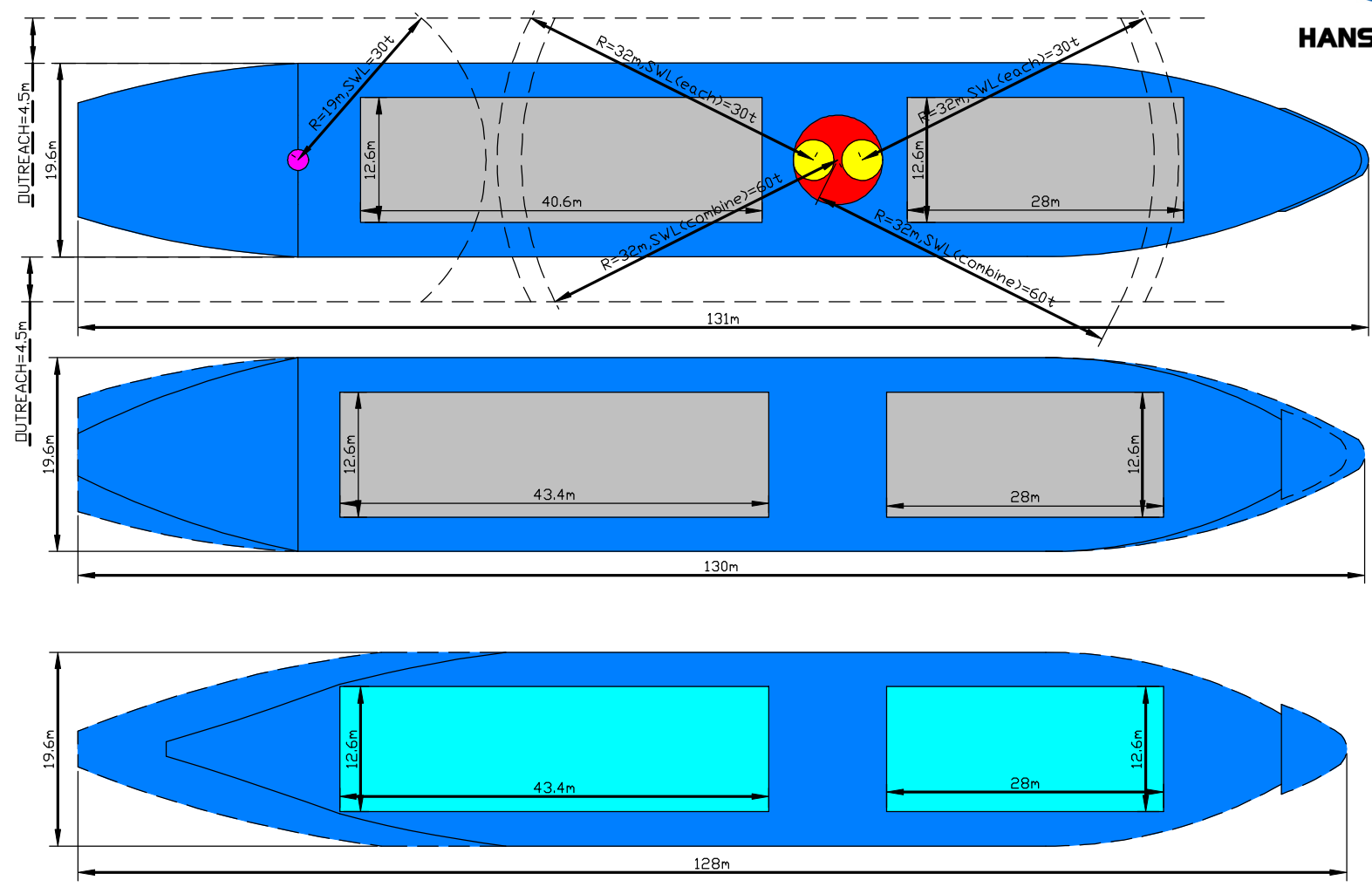
- EACH CRANE
- COMBINE CRANE
- DERRICK
- CARGO HATCH
- CARGO HOLD

DRAWING COEFFICIENT: 1. 2

M. V. HAN HE



HANSSY SHIPPING



**UPPER
DECK**

**TWEEN
DECK**

**BOTTOM
PLAN**

- EACH CRANE** **COMBINE CRANE** **DERRICK BOOM**
- CARGO HATCH** **CARGO HOLD**

DRAWING COEFFICIENT: 1.5