



HANSSY SHIPPING

M. V. HAN HUI
(HONG KONG 1998)

PRINCIPAL PARTICULARS:

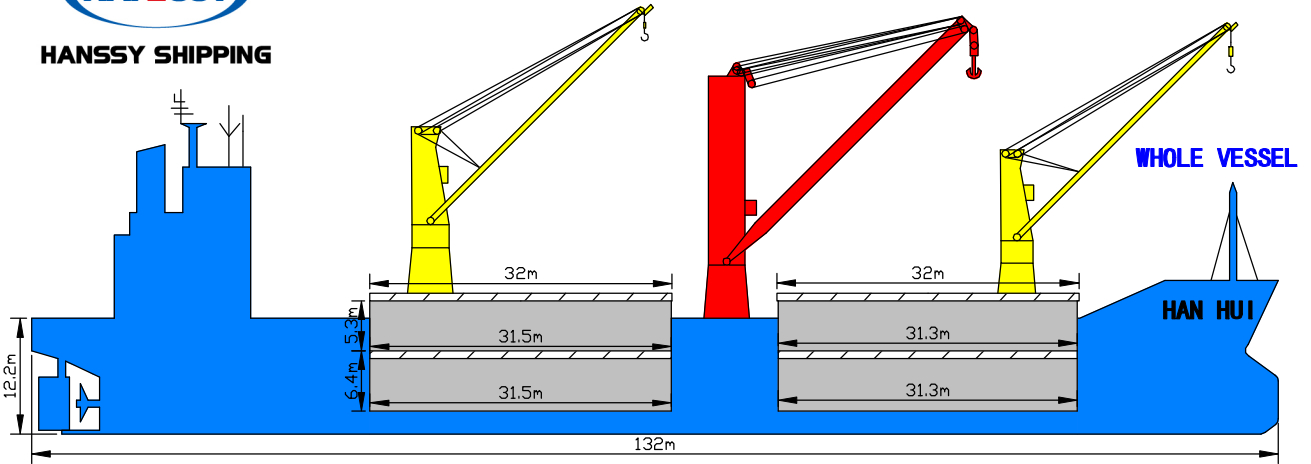
LOA: 130m	DWT: 10,358tons
LBP: 123m	GT: 9,373tons
BREADTH: 21.8m	NT: 3,269tons
DEPTH: 12.2m	JUMBO CRANE: 1*450t
DRAFT: 7.5m	SHIP CRANE: 2*40t
BEAM: 22m	MAX SPEED: 15.6kts
GRAIN CAPACITY: 16,000m ³	SERVICE SPEED: 13.7kts
BALE CAPACITY: 15,563m ³	MAIN ENGINE: MAN B&W 6S35MC
NO. OF HATCH/HOLD: 2/2	M.R.(BHP) 5,700ps*170rpm
IMO NO.: 9184550	CREW: 22
FLAG: HONG KONG	TYPE: GENERAL CARGO SHIP
YEAR OF BUILT: 1998	CLASS: NK
PLACE OF BUILT: MITSUBISHI HEAVY INDUSTRIES, LTD.	
	SHIMONOSEKI SHIPYARD & MACHINERY WORKS

DETAILS ARE BELIEVED TO BE CORRECT,BUT ARE NOT GUARANTEED

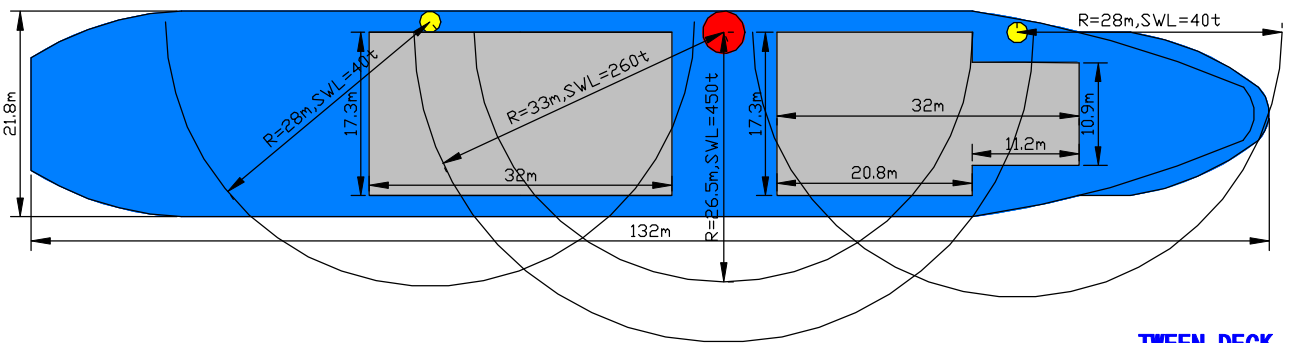


HANSY SHIPPING

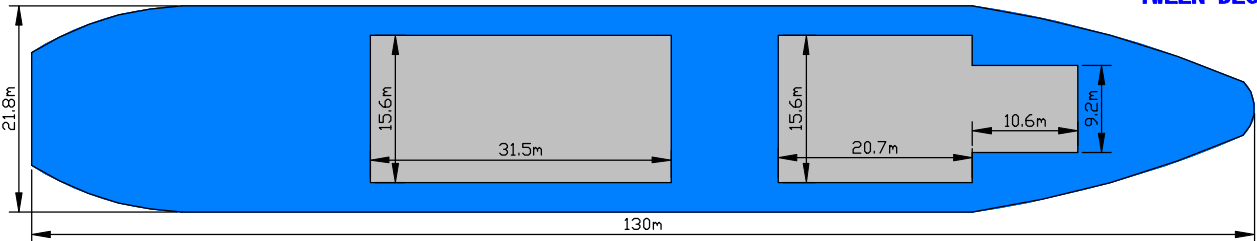
M. V. HAN HUI (HONG KONG 1998)



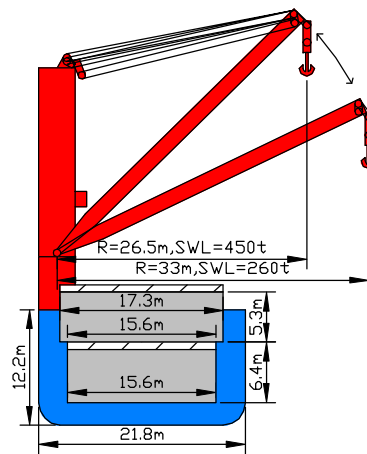
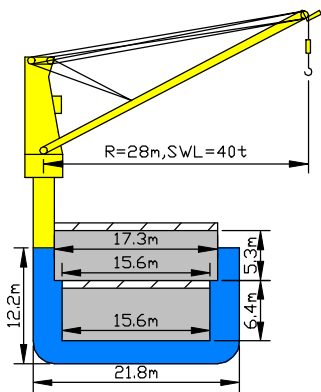
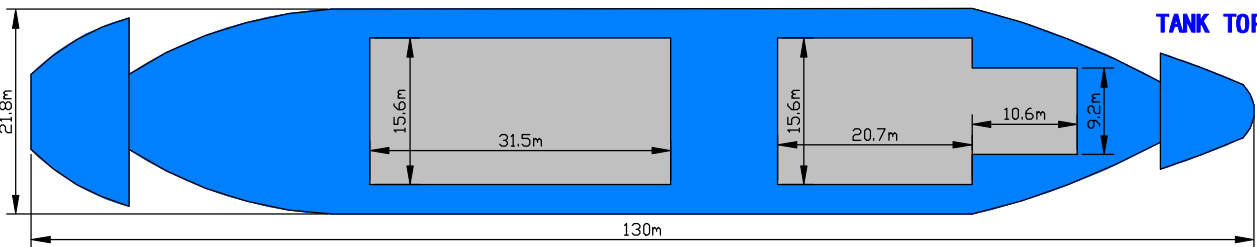
UPPER DECK



TWEEN DECK



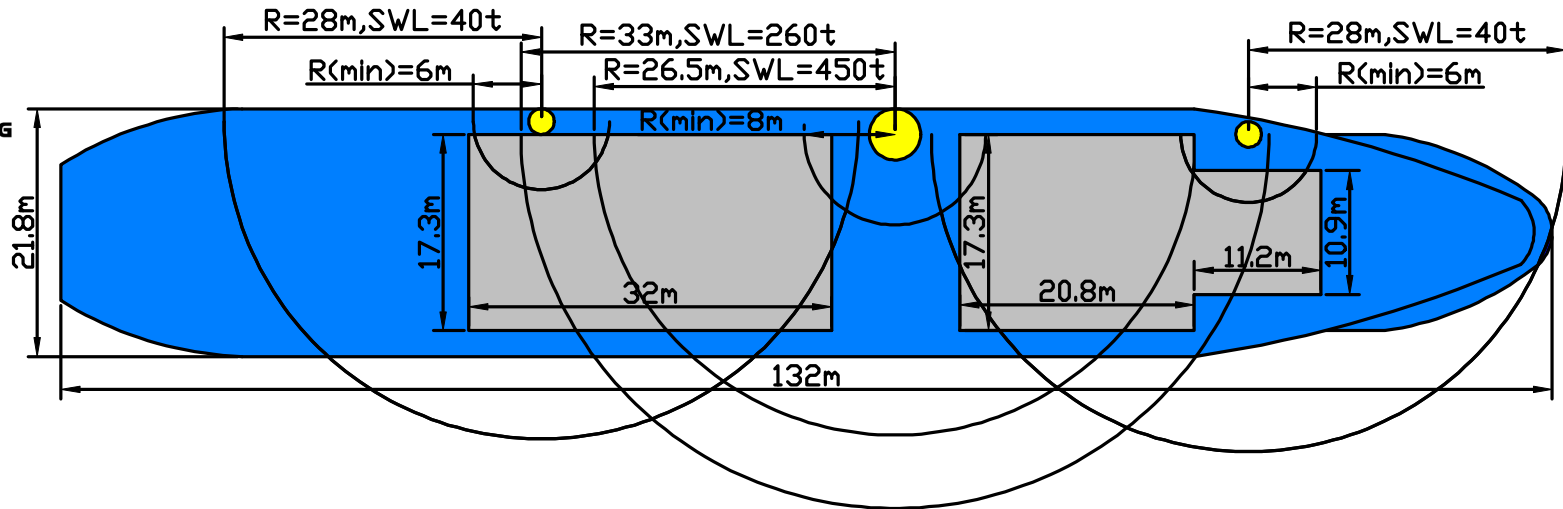
TANK TOP



SHIP CRANE WITH CARGO HATCH AND CARGO HOLD D

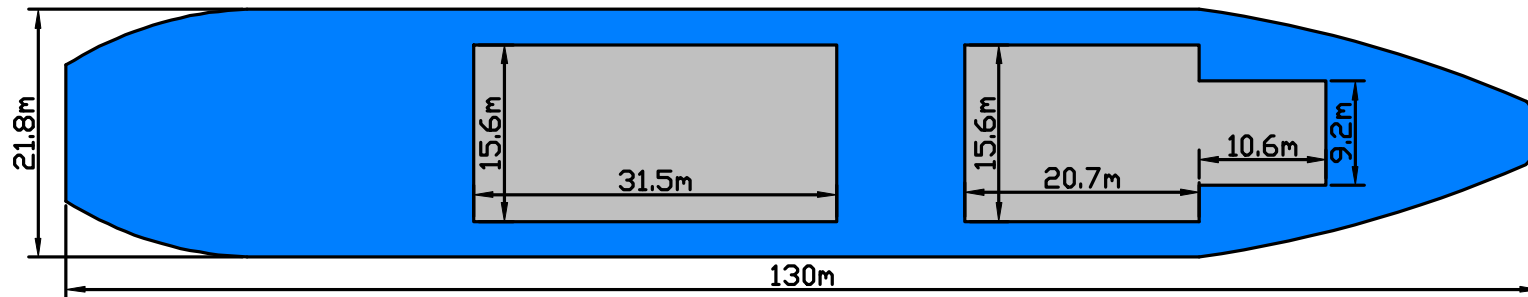
JUMBO CRANE WITH CARGO HATCH AND CARGO HOLD D

- SHIP CRANE
- JUMBO CRANE
- CARGO HATCH OR CARGO HOLD

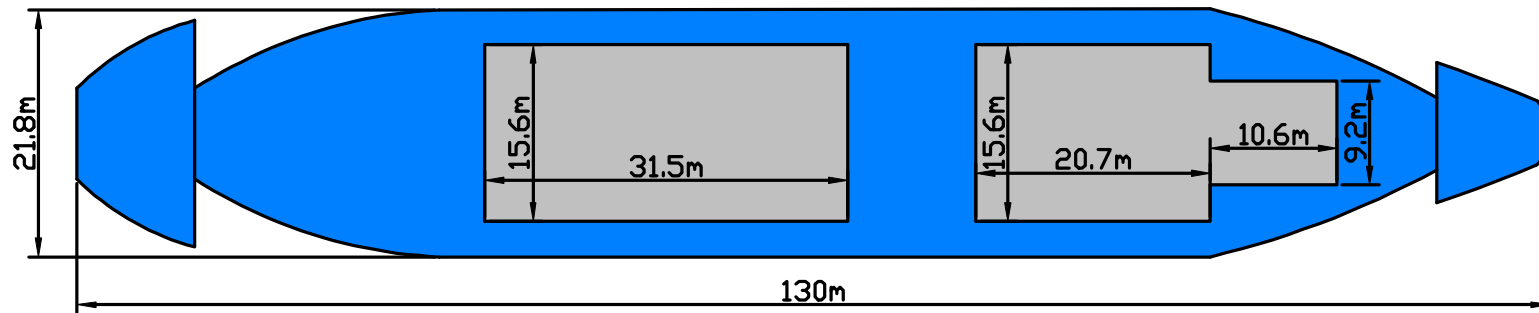


M. V.
HAN HUI

UPPER DECK



TWEEN DECK



TANK TOP

■ CRANE ■ CARGO HATCH OR CARGO HOLD